

NICFI Program Q1 Update (Mar 2022)

This first quarterly report of 2022 provides an update of the activities completed in this quarter, the data available and key statistics and metrics gathered from insights collected by the project team and the strategic partners and general partners.

News and Media

In this last quarter there has been a number of news items related to the program. Some example are linked below:

Extension to the program until September 2023 was granted on 16th March 2022.

<https://www.nicfi.no/current/how-to-save-rainforests-with-satellites-highlights-of-the-nicfi-satellite-imagery-program/>

NASA Servir presented a dedicated session to Committee on Earth Observation Satellites (CEOS) Working Group on Capacity Development & Data Democracy (WGCapD) on the NICFI Satellite Data Program following previous dedicated sessions on the topic. The [webinar](#) boasted over 260 participants, mainly from Central America, but also from other parts of Latin America.

Planet University launches NICFI Satellite Data Program specific materials that covers the basics of EO and of how to use Planet products. Depending on usage it may become the future home to all materials for the NICFI Satellite data program.

NICFI Satellite Data program was shortlisted for Norwegian Government [Bedre Stat Prisen](#) an award for innovation in the public sector. Whilst unsuccessful in winning the program made it to the top 3 selected.

Activities

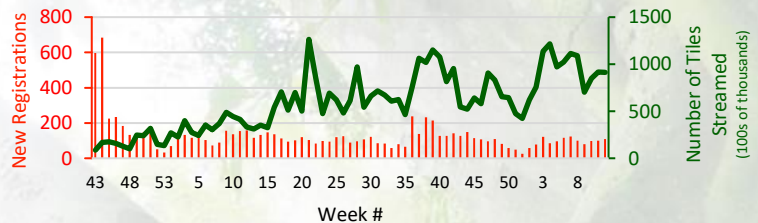
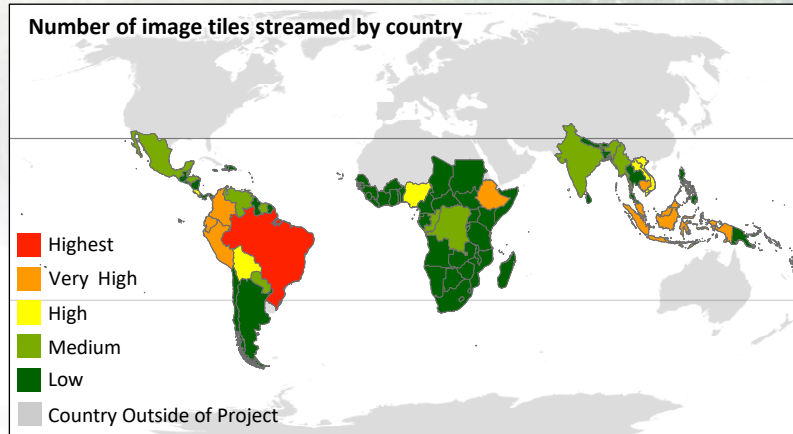
- Continued delivery of monthly mosaics.
- General Partner onboarding of new users JRC, Brazil users.
- Phase 1 SPOT6/7 data made available to all L2 users.
- Phase 2 SPOT6/7 selection completed.
- User outreach and support across user groups
- Database of Users Stories developed.
- Social media playbook developed and designed to help users share stories and for tracking.
- Continued outreach with Purpose Allies/Strategic partners.
- GEO RFP awarded and training materials provided
- Continued outreach with ESRI and other geospatial software providers.
- Review of tools to improve interactive sharing of usage metrics.
- User Survey Feb 2022 sent to registered users
- Level 2 Reporting template shared and Level 2 3-month reports received.

Events

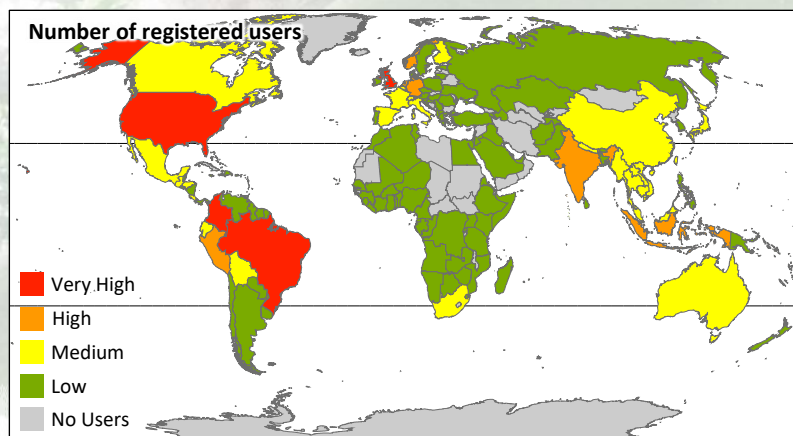
- Science group roundtable 16th Feb 2022
- NICFI Data Program Meeting 24-25th Feb 2022
- Private sector roundtable 3rd Mar 2022

Resources and Helpdesk

Tier one support has handled 34 tickets in this quarter (293 overall + 252 Tier One requests sent directly to Planet) with issues or questions typically resolved within hours. Most commonly these have been on topics of download and discovery, access through other platforms such as GEE. Additional support material has been generated, and the launch page has been redesigned to make things more visible and accessible with links to enablement materials such as FAQs and User guides available in five languages (English, Spanish, French, Portuguese and Bahasa Indonesian). Additional resources including a [community resource page](#) are available for users and a community forum is due to come this summer. Following 90% positive response during our recent survey to having a forum for the NICFI Community users.



97 countries included in the NICFI program with over 12,200 registered users from **155 countries** worldwide. To date, **44.8 million tiles** streamed from Planet Explorer.



NICFI Program Q1 Update (Mar 2022)

General Partners

44 General Partners in the program from 24 different countries. 215 active user keys accounting for 86% of issued keys.

- Planet accumulated Scene usage: 53,041,843 sq km Scene downloads and 4,428,082 Streamed tile views showing a considerable growth since Q4 2021 as more General Partners are now using the data.
- SPOT5/6 and 7 Scene usage 78,388 Scene streams

Activities in Q1 included:

- Phase 2 SPOT6/7 selection
- Regular engagement and support
- Building of Level 2 user stories

Publications

Since the program started over 15 peer review articles are in review. Below includes some of the recently published articles in scientific journals:

- [High-resolution planet satellite imagery and multi-temporal surveys to predict risk of tree mortality in tropical eucalypt forestry](#)
- [Detecting gold mine impacts on insect biodiversity in a tropical mining frontier with SmallSat Imagery](#)

Activities next Quarter

- Ongoing delivery of Level 1 monthly mosaics.
- Ongoing support to Level 2 users.
- Ongoing support to Purpose Allies/Platform partners with quarterly meetings.
- Complete NICFI Satellite Data Program Logo.
- Share Social Media Playbook with Level 1 and Level 2 users.
- Explore additional Purpose Allies.
- Continue to build momentum in engagement activities including to new groups and initiatives.
- Ongoing outreach with other geospatial software and platform providers at both local and global scale with a prioritisation of user community needs
- Elaborate on open call webinars to engage wider NICFI user community and support existing user base.
- Build community forum for knowledge sharing and discussion.
- Events
 - World Forestry Congress – South Korea, May 2022
 - Living Planet – Germany, 23-27th May
 - Greenpeace Data Activist Co-op - 1st June
 - GEO Indigenous Webinar 2nd June
 - Mongabay Webinar 2nd June
 - OTFF – Norway, 21-22nd June
 - Indigenous round table TBD June
 - Scientific Roundtable 30th June
 - Pulitzer centre workshops TBD July
 - ForestSat – Germany, 29th Aug – 2nd Sept

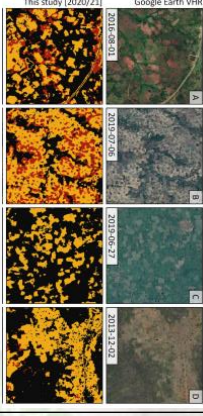
User Stories

Centre for the Study of Biological Diversity, University of Guyana

Gold mining is a major driver of Amazonian forest loss and degradation. As mining activity encroaches on primary forest in remote and inaccessible areas, satellite imagery provides crucial data for monitoring mining-related deforestation and the impact on biodiversity.

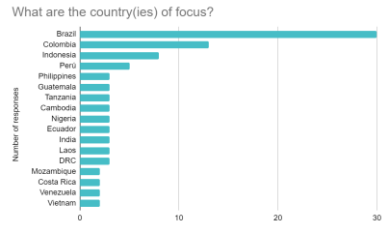
This study set out to detect artisanal gold mining using high-resolution imagery from Planetscope imagery at 3.7m spatial resolution. Their paper, linked in Publications is accompanied by their illustrative abstract on [YouTube](#).

WWF Brasil and the Kaninde Ethno-Environmental Defense Association are using the NICFI-Planet data to support indigenous communities monitoring and defending their territory in the Brazilian Amazon. They note that the information helps in early monitoring and alerts system, which is complemented by an indigenous patrol team that performs complementary surveillance on the ground. The data from the NICFI Satellite Data Program also helps the indigenous organizations to endorse legal complaints to the relevant authorities and bring greater attention to the importance of protecting indigenous territories in the Amazon.

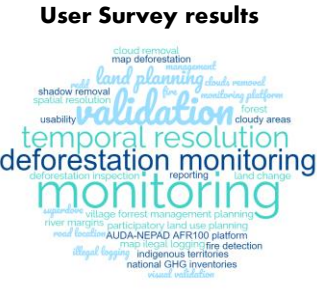


UCLovain and Humboldt-Universitat

Smallholder systems are challenged by 3 characteristics; the spatially fragmented nature of smallholding, diverse cultivation practices and therefore management and dynamics of croplands in smallholder systems. Access to the Level 1 mosaics at this unprecedented scale has provided the potential to overcome these challenges. The availability of the data in GEE offers the infrastructure to analyse these datasets to better map across a large 400,000 sq km study region in Northern Mozambique. This information helps to better understand the landscape, to improve land management practices, including cultivation and irrigation, in a timely manner, where it is most needed.



In February 2022 the program team circulated a survey to all users. This survey was designed to capture information focused on use cases but also on data platforms of most importance to access geospatial information. The results gathered help to inform the project team on additional platforms that should be supported (over an above the view only capability provided by the Level 1 license) whilst also highlighting numerous new user cases and serving to reiterate the value of this data for a range of forest focused activities, centred on monitoring. Encouragingly, the majority of users mentioned they already are able to access data in tools they are using, including our existing Purpose Allies, GEE and through Planet.



Partner profile – Sentinel Hub

Sentinel Hub, operated by Sinergise, is an engine for processing petabytes of satellite data. It is opening the doors for machine learning and helping hundreds of application developers worldwide. It makes Sentinel, Landsat, and other Earth observation imagery, including the NICFI Satellite Data Program mosaics easily accessible for browsing, visualization and analysis. Scale your system globally with an intuitive and user-friendly interface, without any hassle.

Purpose Allies



Outreach Partners

