

# NICFI Program Q4 Update (Dec 2021)

This final quarterly report of 2021 provides an update of the activities completed in this quarter, the data available and key statistics and metrics gathered from insights collected by the project team, including the status of roll out to the General Partners.

## News and Media

In this last quarter media there has been widespread activity in the media and through the project partners about the program. Some example are linked below:  
**One year of the program press releases** [KSAT](#) and [Planet](#) released press releases to acknowledge 1 year of the NICFI Satellite Data Program to highlight the impact and a selection of user stories gathered to date.

Fitting nicely following early activity at COP26 where the [Declaration on Forests and Land Use](#) was signed on 2<sup>nd</sup> November, which reaffirmed the commitment to sustainable land use, conservation and protection with a goal of halting and reversing forest loss and land degradation by 2030, the [COP26 side event](#) hosted by Planet and the NICFI Program team on 7<sup>th</sup> November was a reminder of what information can be used to help meet that goal.



The event attracted international attendees from Ministry level to users from across academia, NGOs and industry sharing their experience and the value of this data as well as an opportunity to network.

**NICFI Data program shortlisted** for Norwegian Government [Bedre Stat Prisen](#) with awards announcement on 26<sup>th</sup> January 2022. This is an award for innovation in the public sector.

## Activities

- Continued delivery of monthly mosaics
- General Partner onboarding
- Level 2 Call for Proposal winner onboarding
- User outreach and support across user groups
- Database of Users Stories developed
- Continued outreach with Microsoft, AWS and Mapbox
- Closure of GEO RFP 27<sup>th</sup> November
- Continued outreach with ESRI and other geospatial software providers
- Review of tools to improve interactive sharing of usage metrics
- Preparation of Level 2 Reporting template
- Collaboration with [SentinelHub](#) to make the basemaps data available in EOBrowser

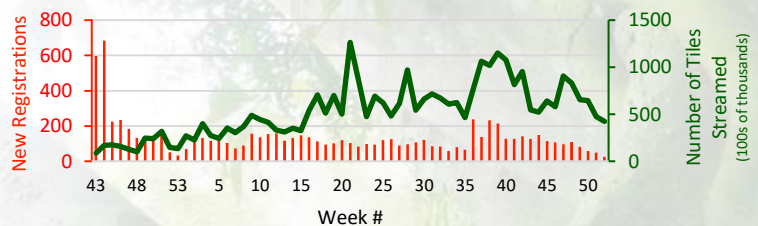
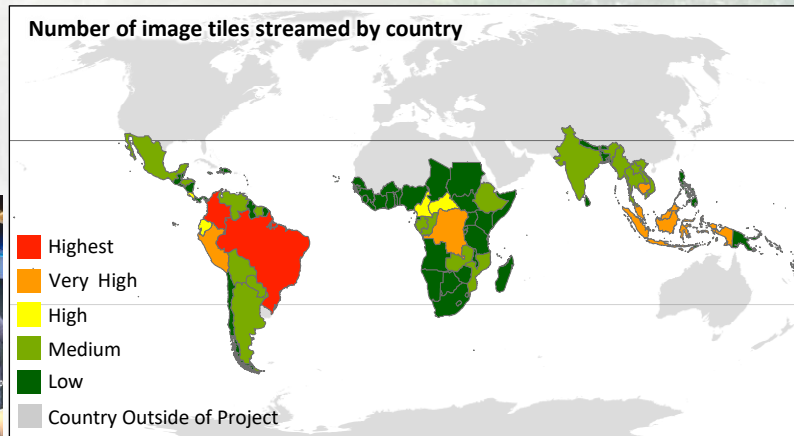
## Events

- Science group roundtable 13<sup>th</sup> Oct 2021
- Planet Explore 12-13<sup>th</sup> Oct 2021
- COP26 side event 7<sup>th</sup> Nov 2021 (60+ attendees)
- GEO4GOOD 16-19<sup>th</sup> Nov 2021
- Annual Meeting 29<sup>th</sup> Nov 2021 (Project Team)

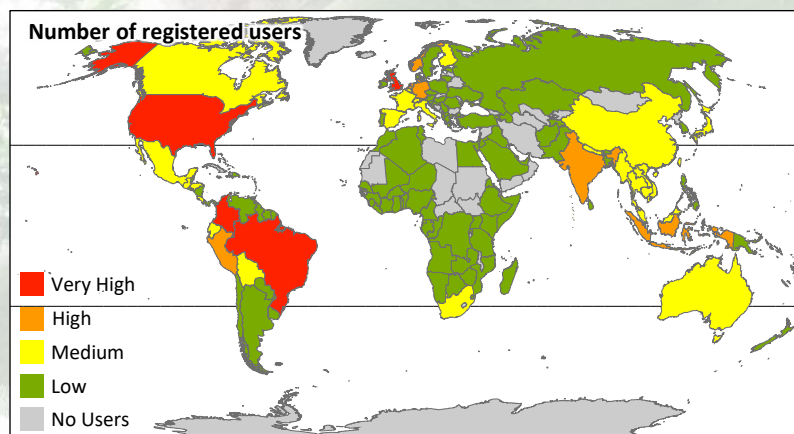
## Resources and Helpdesk

Tier one support has handled 29 tickets in this quarter (228 overall + 115 Tier One requests sent directly to Planet) with issues or questions typically resolved within hours. Most commonly these have been on topics of download and discovery, access through other platforms such as GEE and requests around more information on the program and how the data can be used.

Enablement materials such as FAQs and User guides available in 5 languages (English, Spanish, French, Portuguese and Bahasa Indonesian). Additional resources including a [community resource page](#) are available for users and updates to this page to increase accessibility is part of the 2022 planned activities.



**97 countries** included in the NICFI program with over 10300 registered users from **145 countries** worldwide. To date, **28.9 million tiles** streamed from Planet Explorer.





# NICFI Program Q4 Update (Dec 2021)

## General Partners

41 General Partners in the program from 23 different countries. 192 active user keys accounting for 86% of issued keys.

- Planet Scene usage: 4,530,860 sq km Scene downloads and 1,501,543 Streamed tile views
- SPOT5 Scene usage 1478 Scene streams

### Activities in Q4 included:

- 3 month reporting
- Regular engagement
- SPOT6/7 selection Phase 1 in production
- Start SPOT6/7 selection Phase 2

## Publications

Since the program started >10 peer review articles are in review. Below includes some of the recently published articles in scientific journals

- [The response of illegal mining to revealing its existence](#)
- [Fusion of Sentinel-2 data with High resolution open access Planet Basemaps for grazing lawn detection in Southern African savannahs](#)
- [Estimation of Palm Oil extent in satellite imagery from 2016-2020.](#)

## Activities next Quarter

- Ongoing delivery of monthly mosaics
- Phase 2 SPOT6/7 selection
- Complete final GP onboarding
- Ongoing support and engage with GPs
- Ongoing support to Purpose Allies/Platform partners with regular reporting/meetings for engagement
- Begin outreach to new groups and initiatives as part of wider engagement
- Continue to build momentum in engagement activities
- Ongoing outreach with other geospatial software and platform providers at both local and global scale with a prioritisation of user community needs to facilitate discussion
- Updates to launch page for improved accessibility and ease of use
- Elaborate on open call webinars to engage wider NICFI user community
- Ensure support material is clear for the community to take initiative in their own training and outreach for NICFI
- Support for GEO RFP winners when awarded
- Planning 2022 Event Schedule
- Events
  - Science group roundtable (Feb 2022)
  - Private sector roundtable (Mar 2022)
  - GFOI Webinar series (Date TBD)
  - Open webinar series (Date TBD)

### Purpose Allies

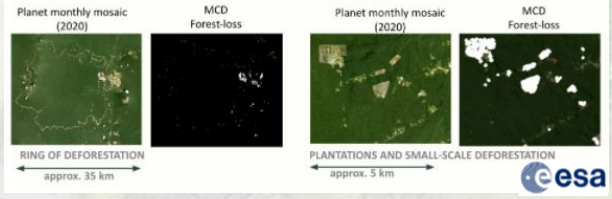


### Outreach Partners

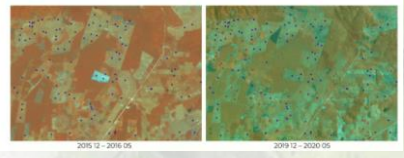


## User Stories

The **European Space Agency's Amazonas Project** is using the Planet-NICFI Tropical Basemaps interoperably with SAR data from Sentinel-1 to validate and improve forest loss detection systems. Source: Gisat and ESA, presented by Neha Joshi at Planet Explore 2021.

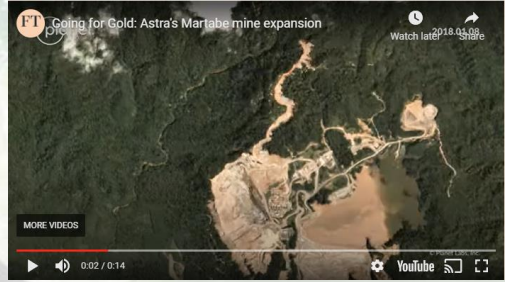


**Wildlife Conservation Society, Guatemala** is advising the National Council for Protected Areas in Guatemala using the Planet-NICFI Basemaps, helping identify early intervention on a key driver of deforestation – cattle irrigation infrastructure (above). Source: WCS Guatemala, presented by Victor Hugo at Planet Explore 2021.



Level 2 user **Mighty Earth** recently published work showing the monitoring of mining expansion and the impact on the habitats of some of the World's rarest species. The daily imagery providing a timelapse of rapid expansion.

### Going for Gold: Astra's Martabe Mine Expansion



## Interactive Metrics

Inspired by [John Hopkins COVID map](#) an interactive dashboard of usage is being developed using PowerBi tools. In parallel discussions with ESRI's online team are also discussing a solution. The output is expected to be something that can be integrated into program team websites to promote the program.



## Partner profile – Mapbox

Providing customisable maps for different applications and websites Mapbox provides a range of map sources and templates for users to get started using different types of image layers to meet their mapping needs. In 2021, a [specific template to include the NICFI imagery](#) were included. The template will help you kickstart your web map with NICFI imagery with the option to switch between imagery from different time periods. It is possible to add similar customizations as detailed in [NICFI Basic](#).