



This fourth quarterly report of 2023 provides an update of the activities completed in this quarter, the key statistics and metrics gathered from insights collected by the project team and the user community.

## News, Media and Outreach

[Press Release](#) at COP28 on 2<sup>nd</sup> December presented the partnership of NICFI with Bezos Earth Fund to continue to purchase satellite imagery under the NICFI Satellite Data Program to support the reduction and reversal of tropical forest deforestation once the current contract ends in September 2024.

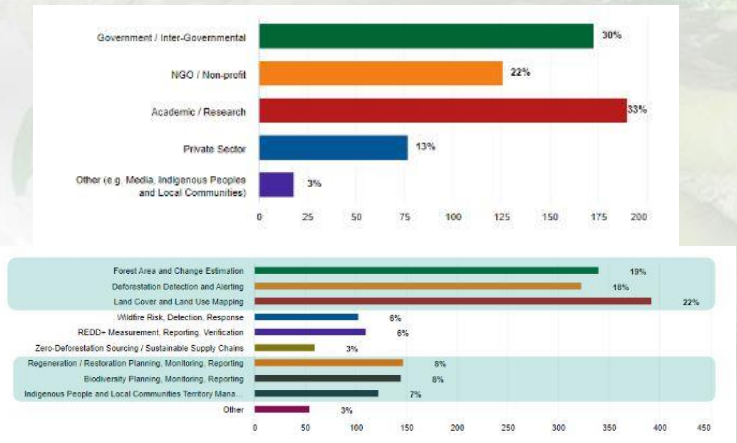
[As the program moved into the fourth year in Q4 2023](#) the number of registered users reached over 25000. A Milestone in the project which began in 2020. This number, whilst large, does not take into consideration those users who also access the data through public sites such as Global Forest Watch or other tools where the data is available meaning the actual usage of the program is far higher than the 25,000 registered users (who have access to view, download and analyse) suggests.

The program team, along with the Norwegian Space Agency met in Berlin for the **Year 3 Annual Review of the program**, hosted by partner Planet.



## User Survey (H2 2023)

The second survey from 2023 was completed in October. The survey was sent out to all users who have given permission to be contacted (16755 users) and there were 623 responses of which 353 completed the full survey and 322 were L1 users and 31 were L2 users.



**90%** would recommend the program to others

**72%** indicate the data is as helpful as possible in achieving their goals

The majority of use cases centre on LULC, Forest area and deforestation as well as transparency. The lowest prevalence in use was related to deforestation-free commodities and zero deforestation sourcing.

## Activities

- Continued delivery of monthly mosaics.
- User outreach and support across user groups.
- Database of Users Stories continually updated and organised by user group.
- Ongoing support to Purpose Allies/Platform partners with quarterly meetings
- Continue to build momentum in engagement activities including to new groups and initiatives.
- Ongoing outreach with other geospatial software and platform providers where relevant.
- Webinar preparation for various events
- Support to NICFI with materials for outreach and promotion of the Program
- [GitHub repo](#) now in place for NICFI and designed to be a centralised repository updated with new code as it is available
- Preparation for year 4 activities
- Capacity building support with key users. Continue to populate user stories database and resource hub with community and program led resources.
- Support NICFI with program outreach requirements

## Events

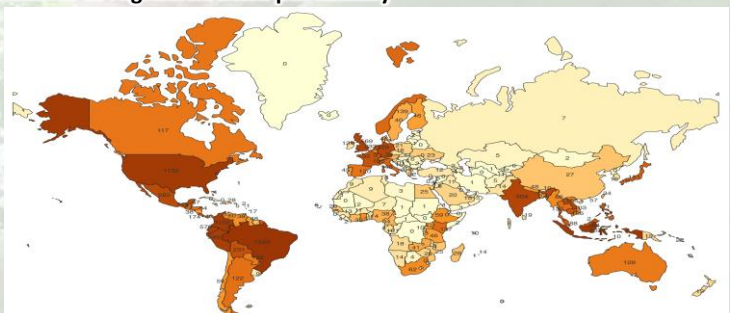
- GEO4GOOD, Washington DC – 10-12<sup>th</sup> October
- Y3 Annual meeting, Berlin – 23-24<sup>th</sup> October
- Indigenous Water Summit, Online – 25-27<sup>th</sup> October
- Nature for life hub, Online – 7-9<sup>th</sup> November
- COP28, Dubai – 30<sup>th</sup> November – 12<sup>th</sup> December

## Resources and Helpdesk

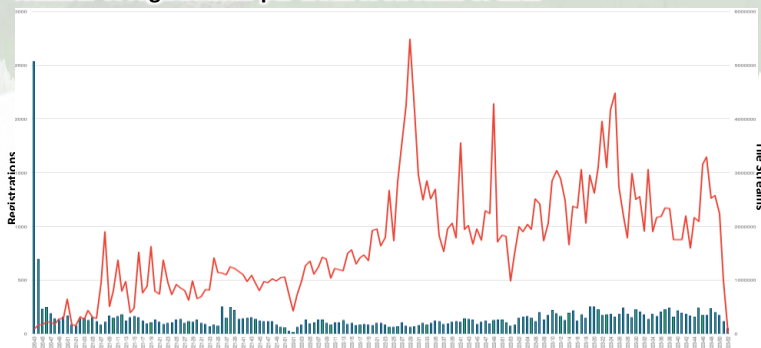
Tier one support has handled 29 tickets in this quarter (636 overall to NICFI Helpdesk + 1012 overall Tier 1 requests sent directly to Planet). Most common requests have been on topics of download and discovery, access through other platforms such as GEE. Additional support material in the form of FAQs, User guides available in five languages (English, Spanish, French, Portuguese and Bahasa Indonesian), a new suite of Level 2 training resources, a Community forum as well as a Twitter page continue to be well used.

**97 countries** included in the NICFI program with over **26,000 registered users** from **158 countries** worldwide. To date, **280 million tiles** streamed from Planet Explorer.

## Number of registered users per country



## Number of registrations per week vs streams of data





## Publications

Some examples of journal articles using the Satellite Data Program are below:

- [Refined fine-scale mapping of tree cover using time series of Planet-NICFI and Sentinel-1 imagery for Southeast Asia \(2016–2021\)](#)
- [Implication of the new VCS jurisdictional and nested REDD methodology on baselines of existing avoided deforestation projects](#)
- [Coupled effects of solar illumination and phenology on vegetation index determination: an analysis over the Amazonian forests using the SuperDove satellite constellation](#)

## Activities Next Quarter

- Ongoing delivery of Level 1 monthly mosaics.
- Ongoing support to Level 2 users.
- Onboarding of Indonesian Government
- Ongoing support to Purpose Allies/Platform partners with quarterly meetings.
- Continue to build momentum in engagement activities including to new groups and initiatives where possible.
- Ongoing outreach with other geospatial software and platform providers where relevant.
- Continue to populate user stories database and resource hub with community and program led resources.
- Continue to populate Github repository

## Events

- [Tekna Technologidagen](#), Oslo – 18<sup>th</sup> January
- GFOI Information Exchange event, Online – 30<sup>th</sup> January
- Scientific Roundtable, Online – 8<sup>th</sup> February
- GFW Webinar, Online – 7<sup>th</sup> March

## Purpose Allies



SINCE NOV 2020

~9k selections of the Planet-NICFI Basemap per month



SINCE APR 2021

11k users  
60k views  
23k sessions



SINCE NOV 2020

~ 300k tile views per month  
35 analysis per week



SINCE DEC 2021

167 views of NICFI related forum posts



Since Q1 2023

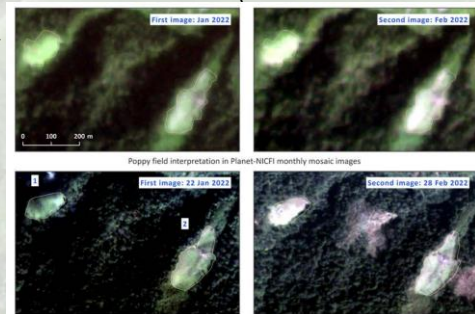
## User Stories

The **Central African Forest Initiative (CAFI)** is supporting the “[Assessment of deforestation and forest degradation and related direct drivers using SEPAL](#)” implemented by the **Food and Agriculture Organization of the United Nations (FAO)**. The project is developing a global, standard, large-scale methodology using open source cloud-computing solutions to assess forest dynamics and quantify direct drivers of deforestation and forest degradation. An essential part of the methodology is validation of the outputs using visual interpretation. More than 12,000 randomly selected points were visually inspected by a group of regional and international experts, identifying the land cover type, presence and kind of change, and associated drivers using a survey form developed in Collect Earth Online and using the Level 1 data. Read more in their [Story map](#).



**Mighty Earth** has developed a Rapid Response deforestation monitoring program [focused on cattle and soy supply chains in Brazil](#) and proactively halts deforestation in its early stages by alerting and urging companies to cease training with farms etc that are linked to deforestation. In combination with **AidEnvironment** they use deforestation alerts with Level 1 and Level2 NICFI Satellite Data Program data as well as data collected through a mobile phone application known as “Do Pasto ao Prato” (DPaP) or “From Pasture to Plate” as input into this new program. Rapid response aims to avoid further environmental destruction and prevent hundreds of hectares of deforestation becoming thousands.

**UNODC** is using the Level 1 data to support their analysis of Opium production and cultivation in Myanmar. In combination with the Level 1 data they are also using High resolution data from Pleiades (not available in the program) to validate and compare the areal extent of poppy fields and, where no high resolution data is available, a difference factor was determined to correct for differences in spatial resolution between the Planet data and Pleiades VHR data.



## User profile – AidEnvironment

AidEnvironment is a not-for-profit sustainability research, strategy and implementation organisation working to achieve transformative sector change. They produce actionable insights and implement sustainable solutions to help protect and restore ecosystems and improve livelihoods in agricultural and forest landscapes across Asia, Africa and Latin America. Their work focuses on deforestation free supply chains, sustainable sector transformation, water management and landscape management. As a Level 1 and 2 user of the NICFI Satellite Data Program they use the imagery as supplementary information to support validation and quantification of deforestation within their reports. AidEnvironment and their reports support governments, companies and CSOs and provide actionable data and analysis designed to eliminate commodity-drive deforestation.

## Outreach Partners



Microsoft



@NICFISatData